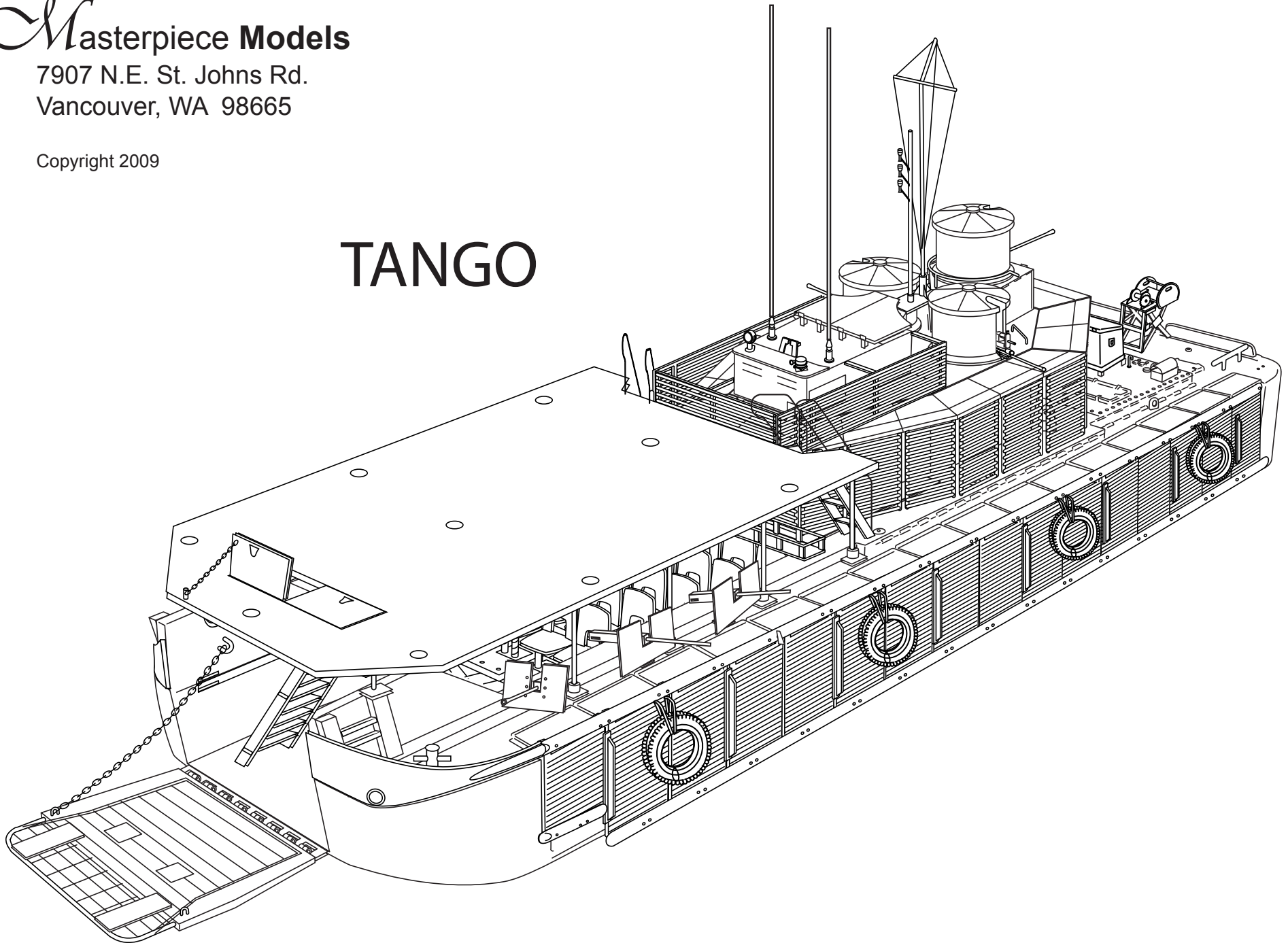


Masterpiece Models

7907 N.E. St. Johns Rd.
Vancouver, WA 98665

Copyright 2009

TANGO

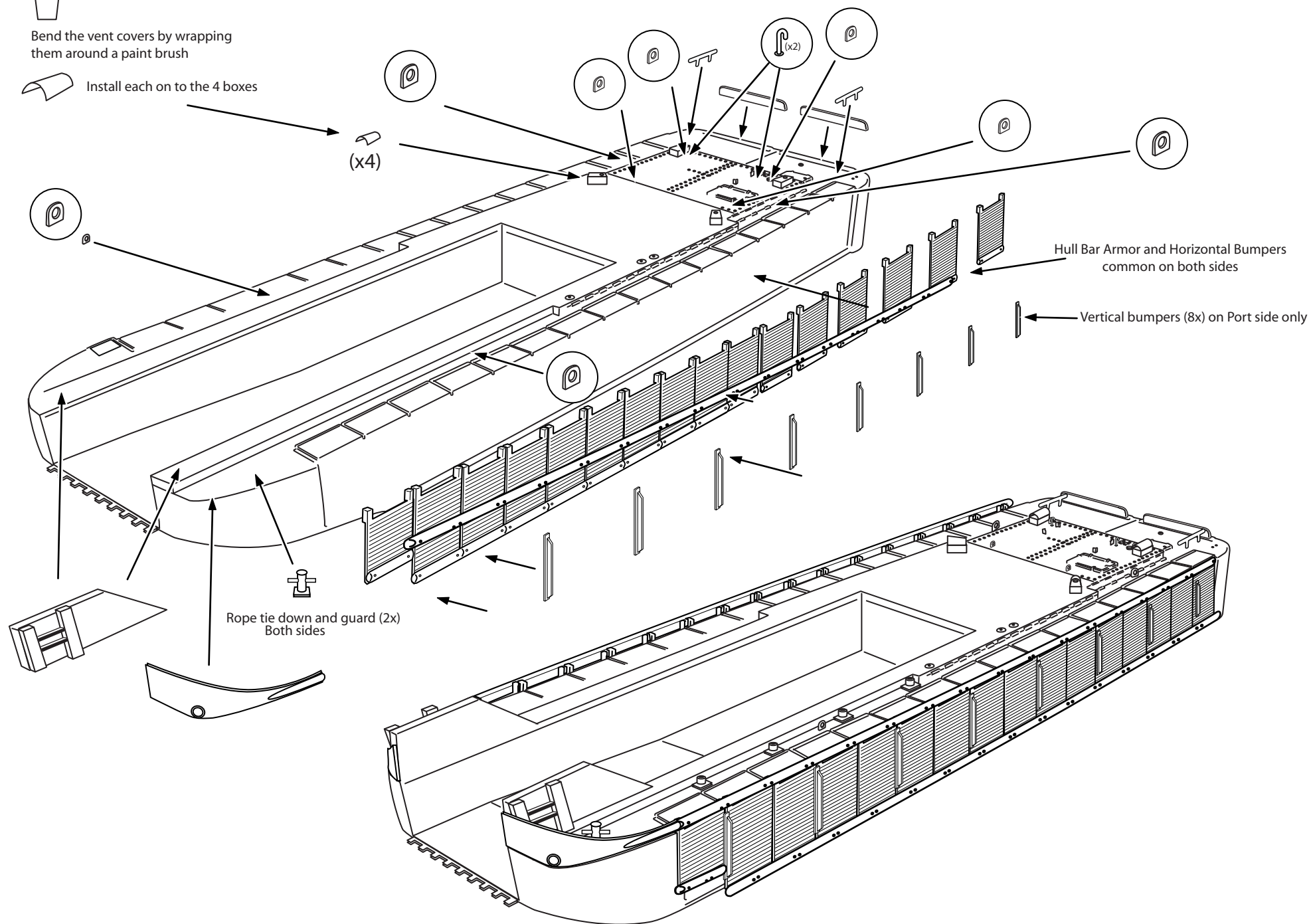


4 photoetched vent covers supplied

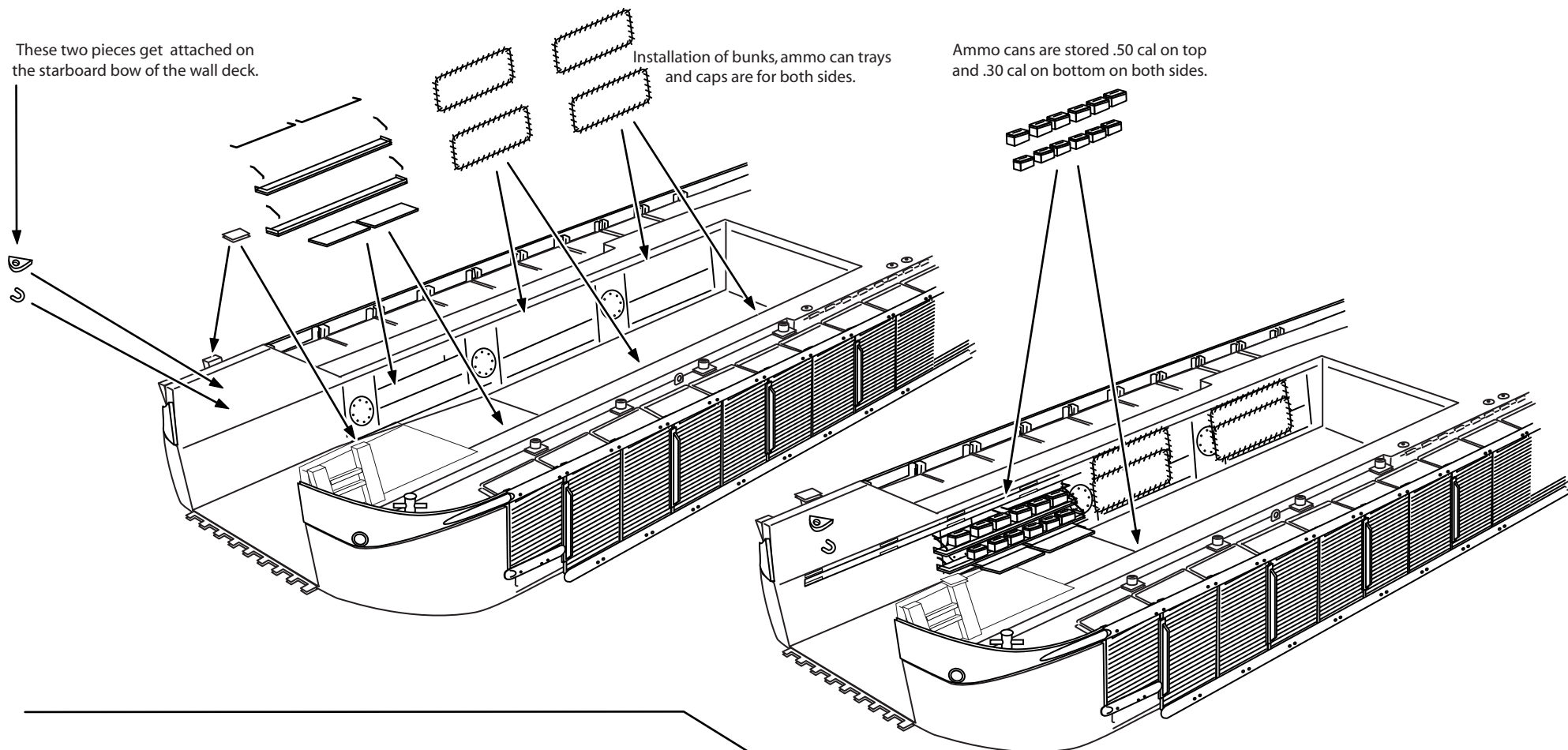


Bend the vent covers by wrapping them around a paint brush

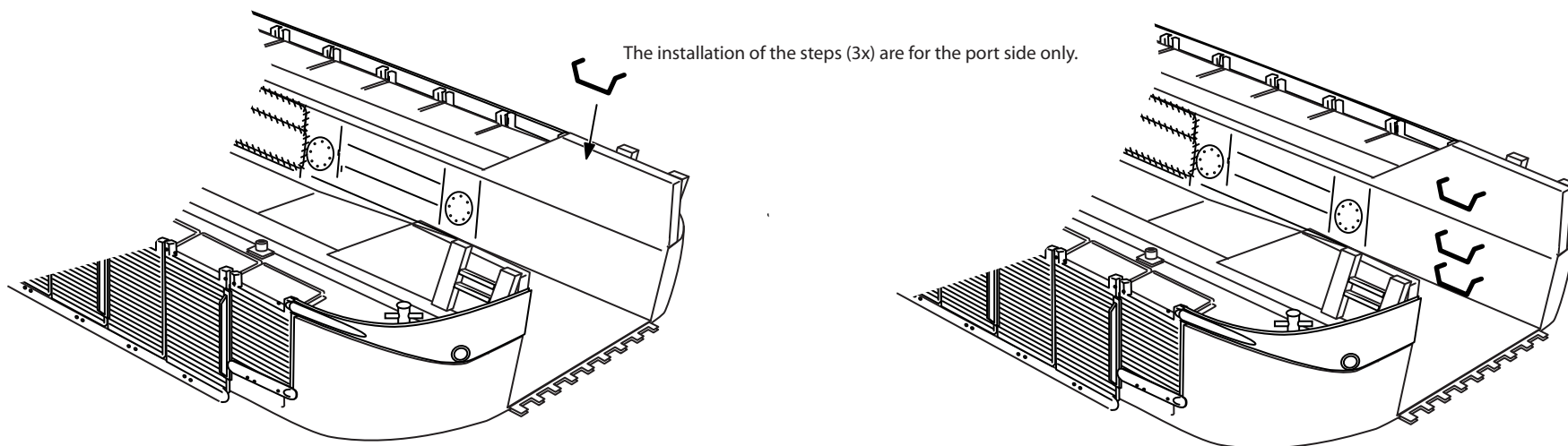
Install each on to the 4 boxes

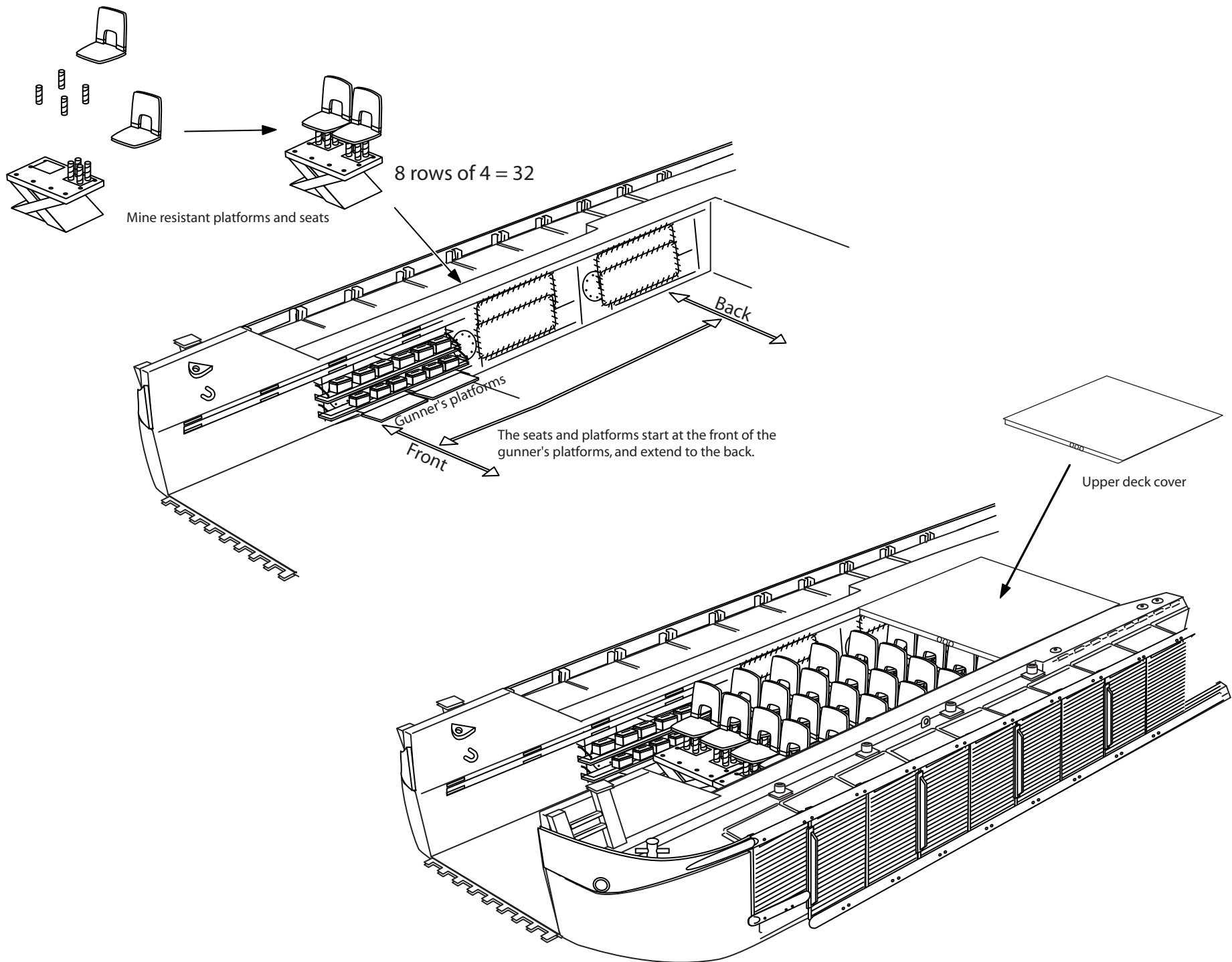


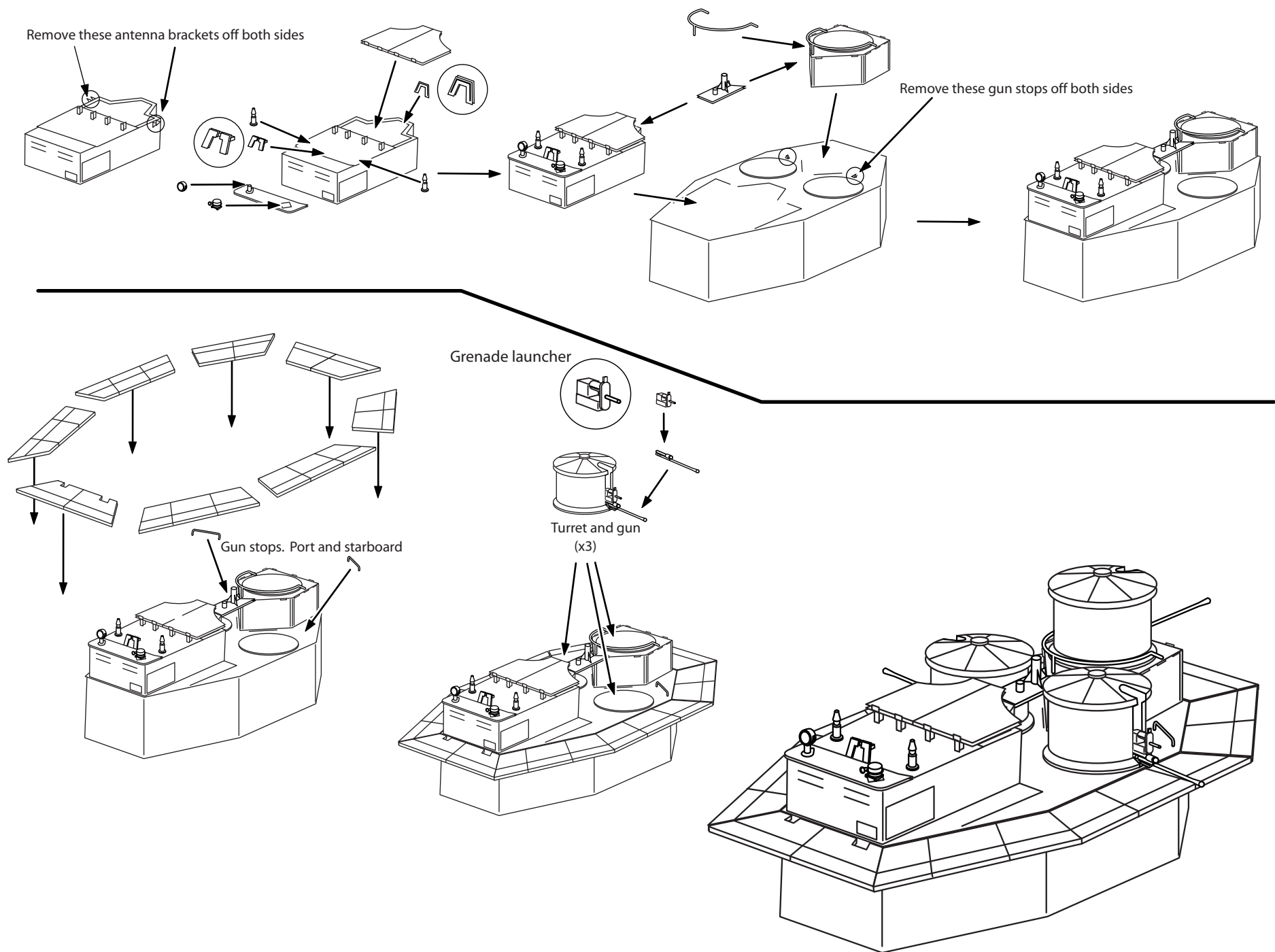
These two pieces get attached on the starboard bow of the wall deck.

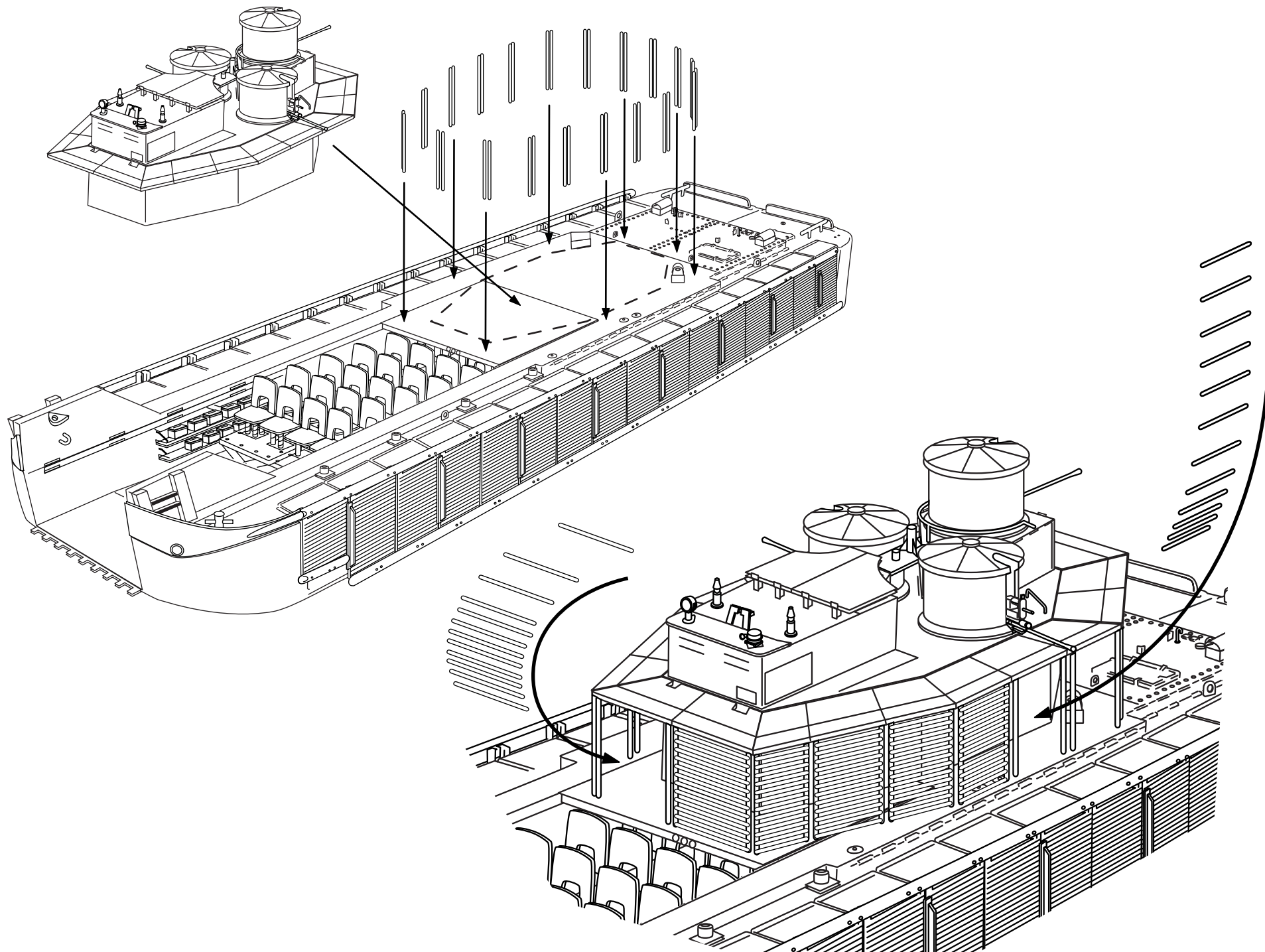


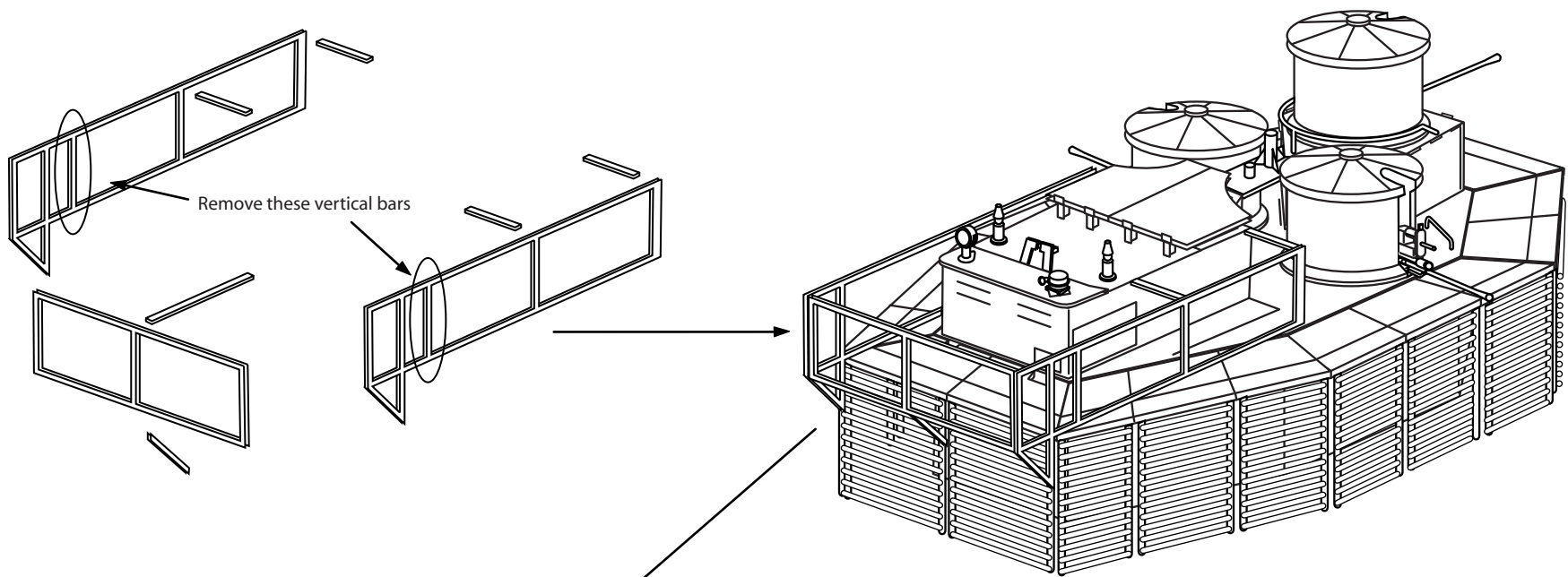
The installation of the steps (3x) are for the port side only.



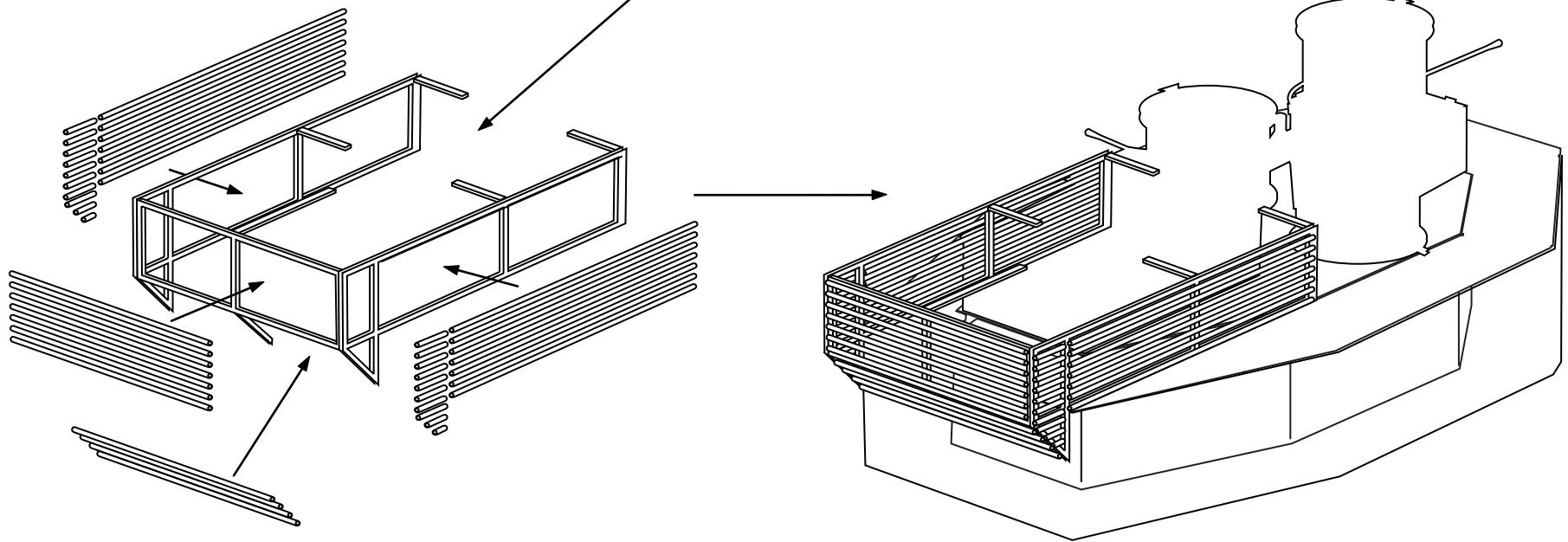




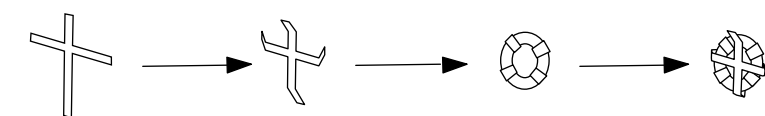




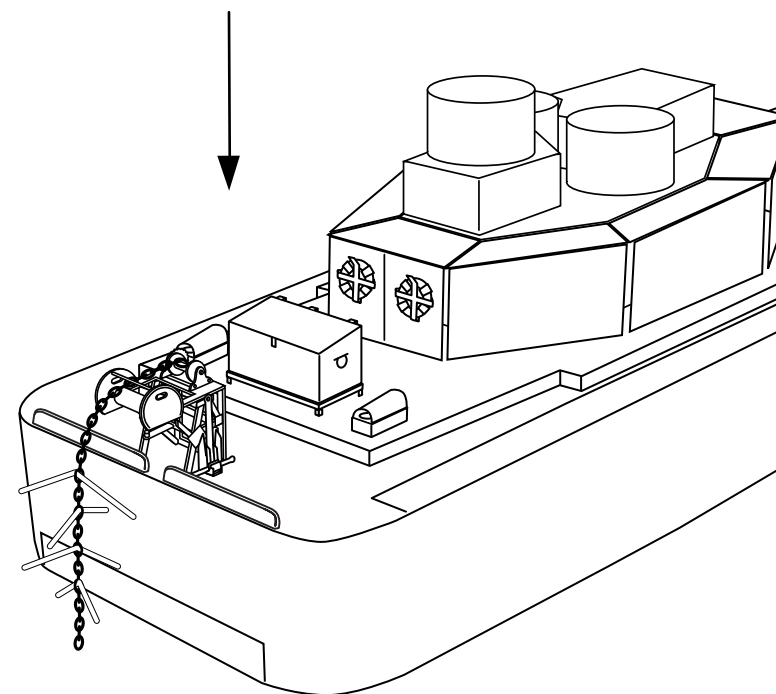
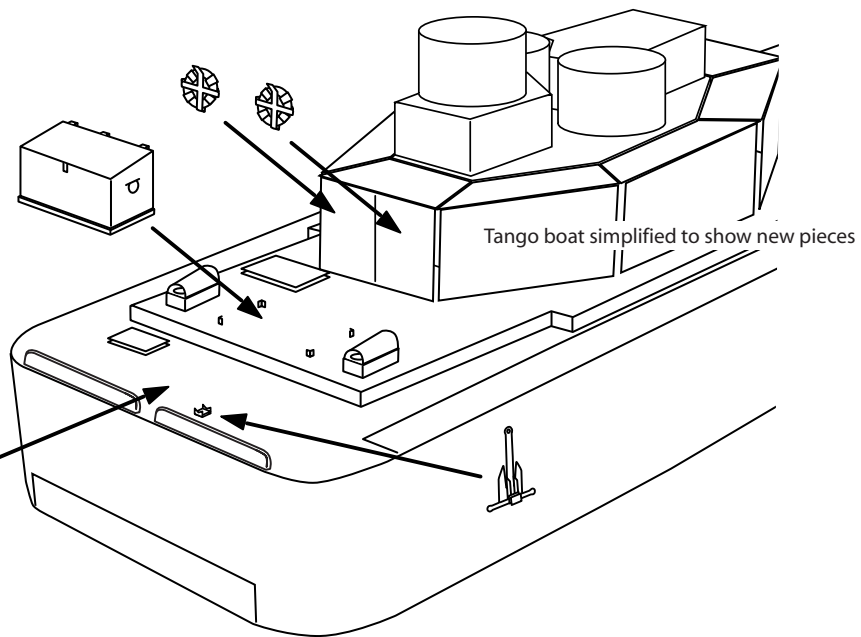
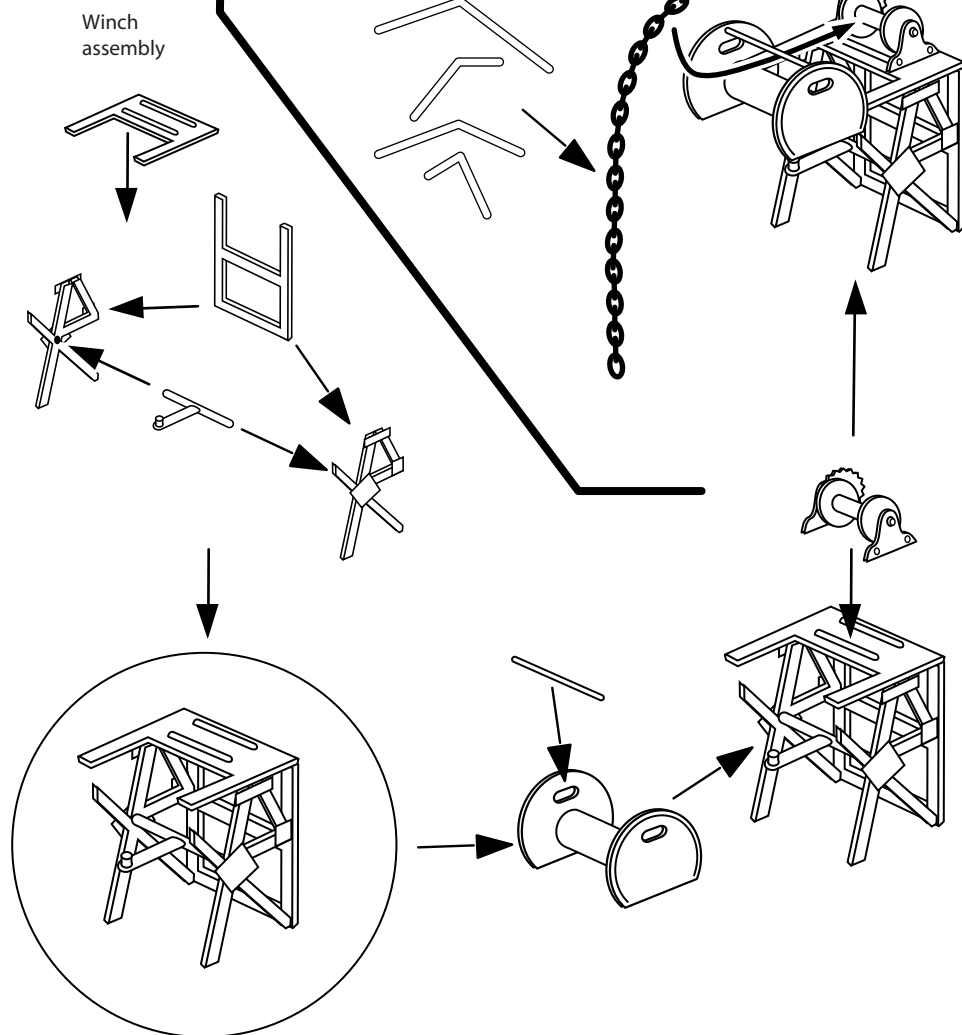
Bar armor shown independently of coxwain station in order to simplify drawing.

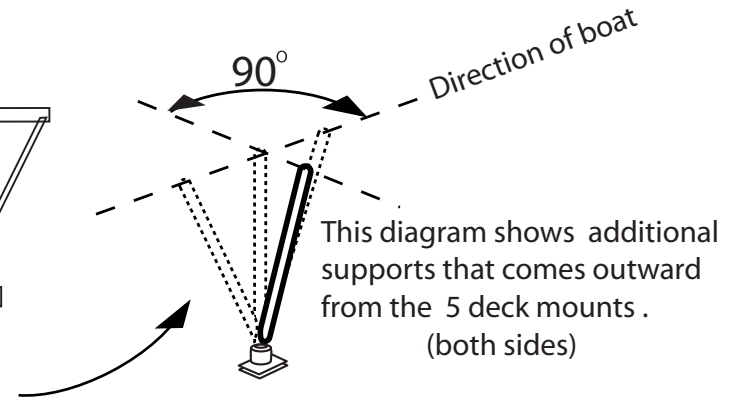
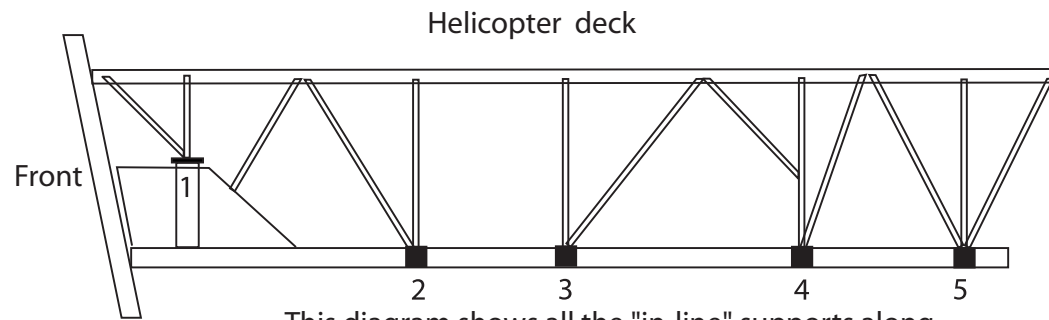


Fold the brass cross pieces at the 3, 6 and 9 o'clock positions inward, and the 12 o'clock piece outward. (x2)

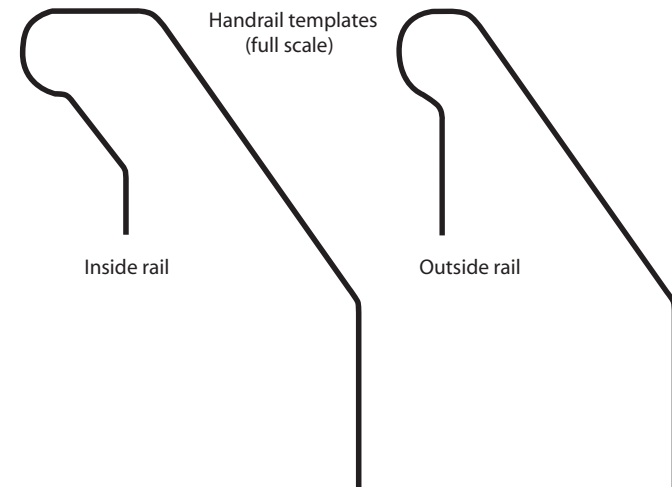
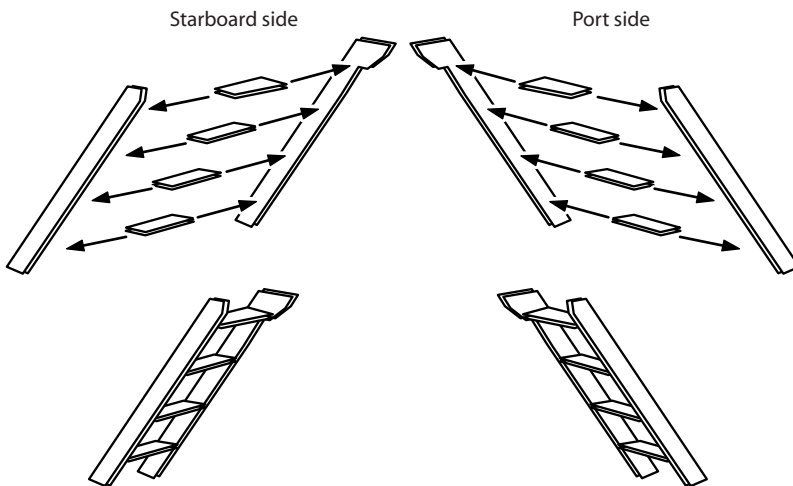


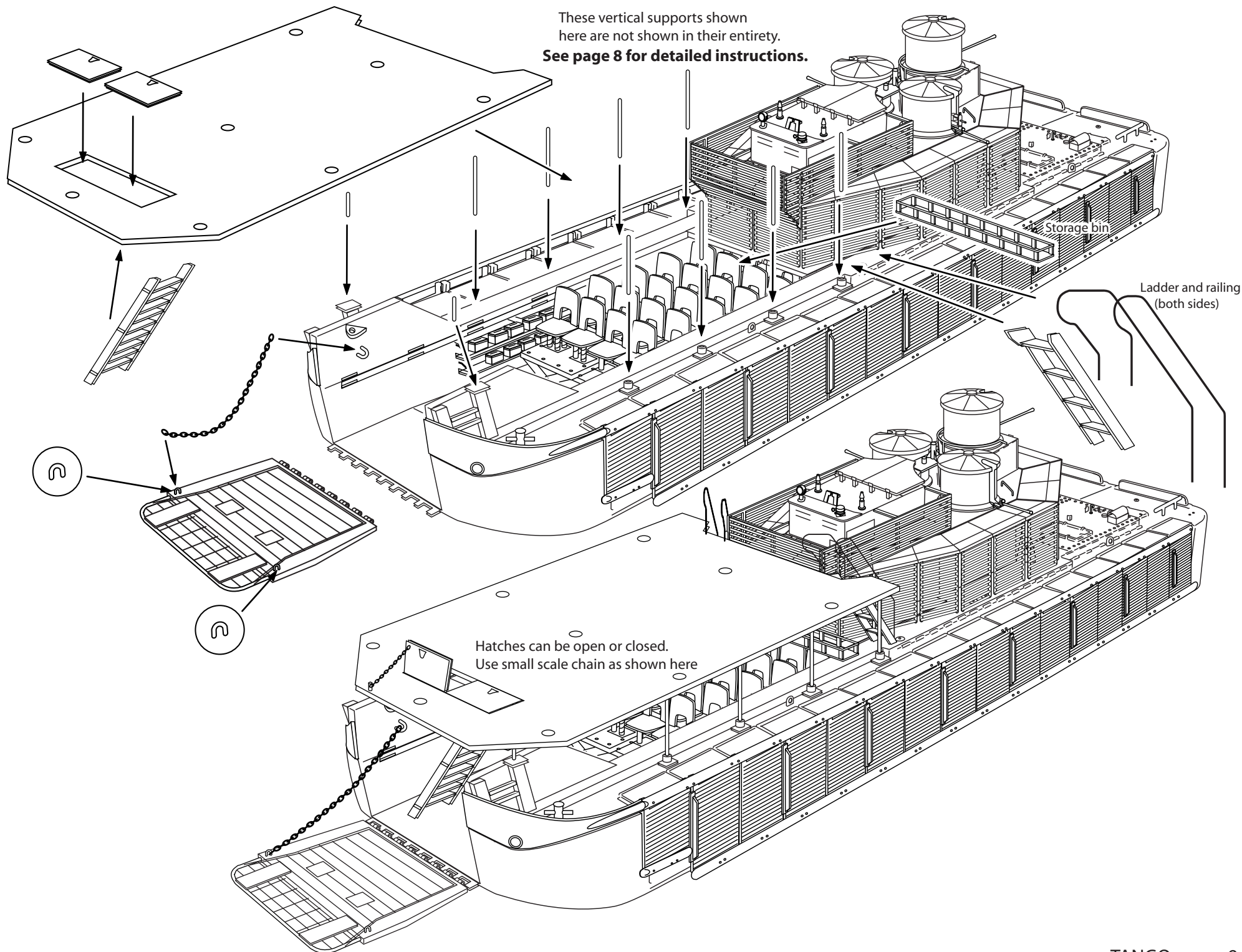
Use bent styrene rod to create the spinning cutters for the mine sweep chain.



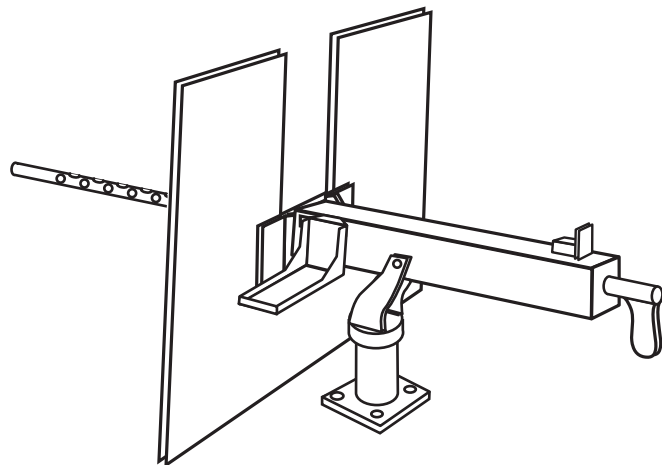
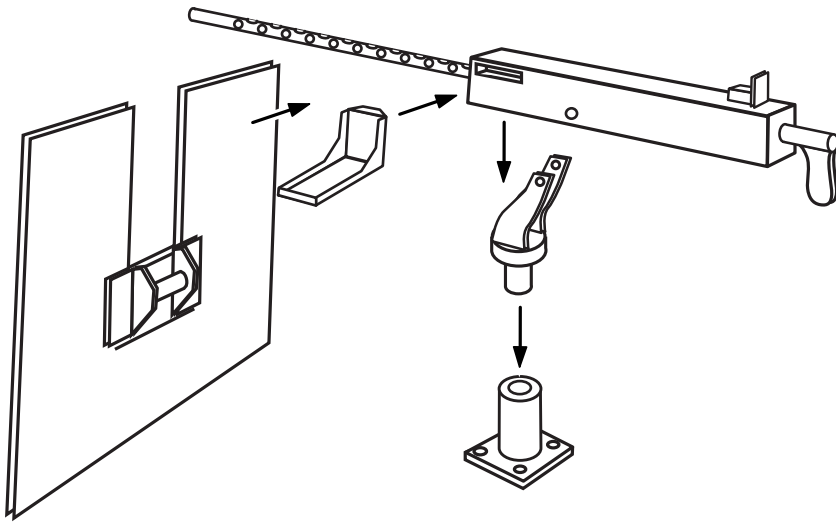


Ladder assembly





30 caliber



50 caliber

