

## Fat Man—Assembly Notes.

The rear assembly of the Fat Man bomb consists of brass photo etched parts. It is very important that the bends in the photo etch be as precise as possible in order to assure proper fit. A small guide has been provided to aid you in the location of the bend. Simply slide the guide over the edge of the etched part until it stops at the small, beveled edge and then scribe a bending guide line.



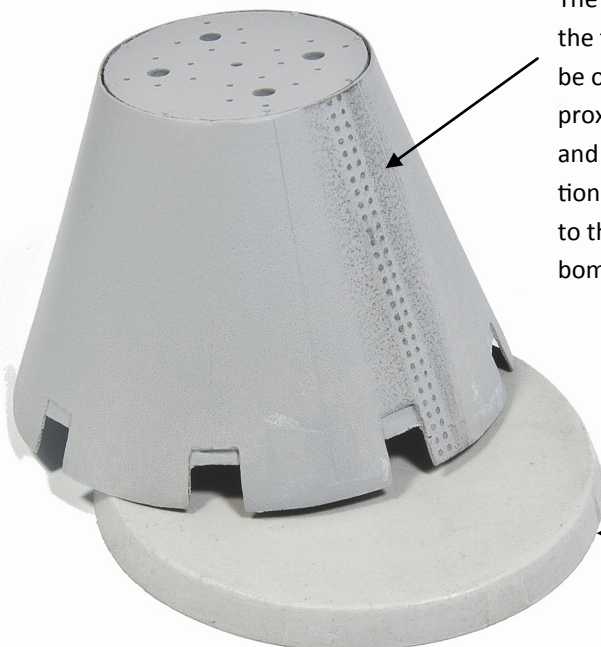
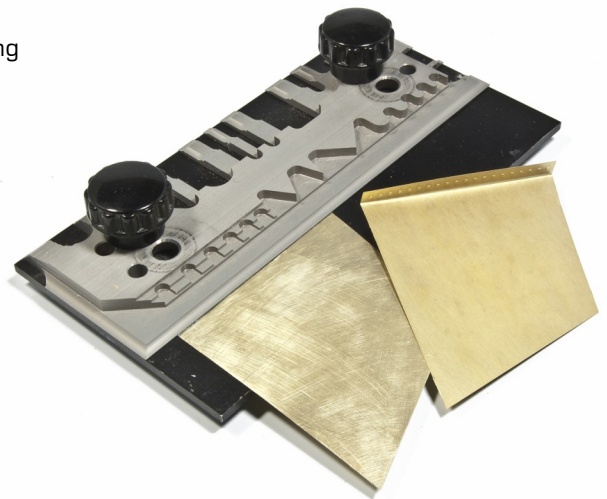
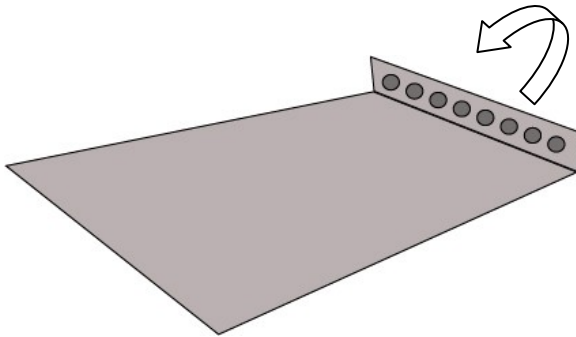
It is HIGHLY recommended that you use a high quality photo etch bending tool such as the Hold-n-Fold line available from The Small Shop.

[[www.thesmallshop.com](http://www.thesmallshop.com)]

It is HIGHLY Recommended that all brass parts be annealed in order to ease in bending before beginning.

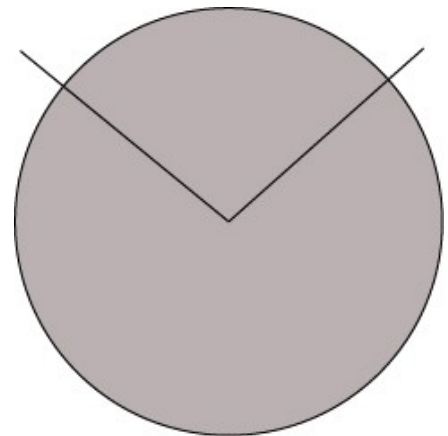
[[en.wikipedia.org/wiki/annealing-\(metallurgy\)](http://en.wikipedia.org/wiki/annealing-(metallurgy))]

EXCEPT were noted—all bends will fold upward on the face with the rivet detail.



The rivet patterns of the tail section should be orientated at approximately the 10 and 2 o'clock positions when attached to the body of the bomb.

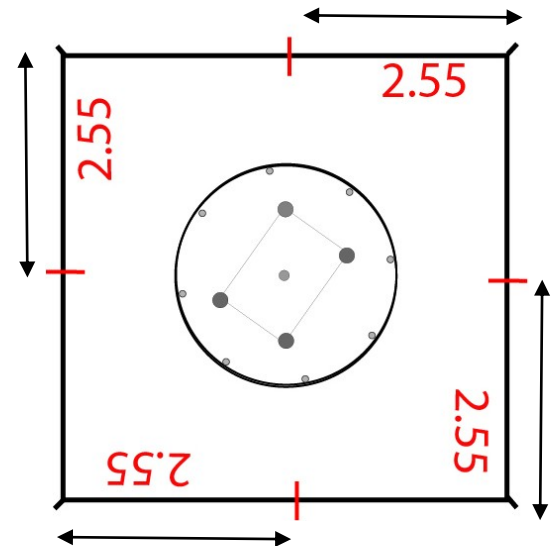
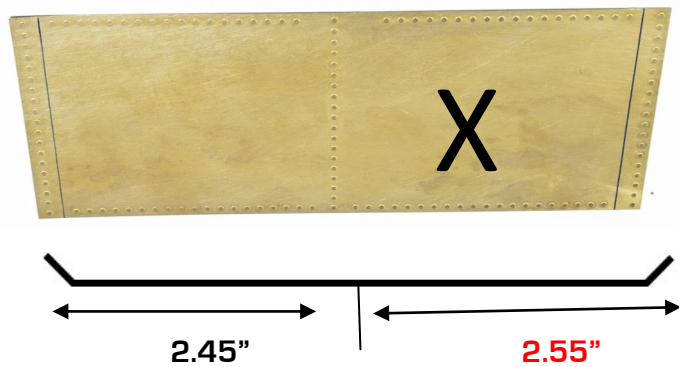
10 o'clock 2 o'clock



Please use caution when handling the tail piece. An insert disc has been provided to aid in protecting the delicate edge detail while assembling the tail section.

# Assembly of the photo etched fins: Outer Square

Using the measuring tool for proper location, bend both ends of the large rectangular parts to a 45 degree angle.

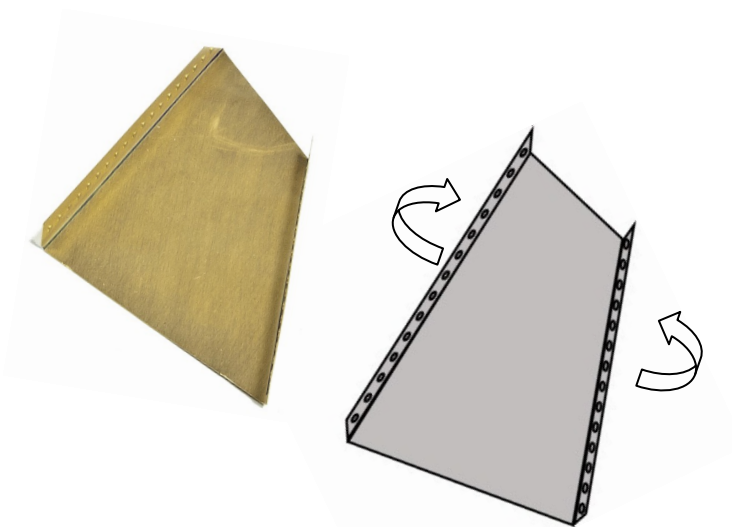


NOTE— Center rivet pattern on the outside fins is slightly offset.

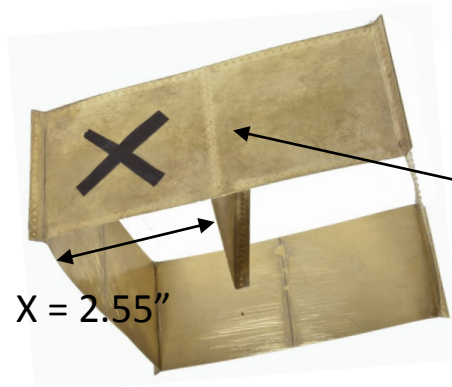
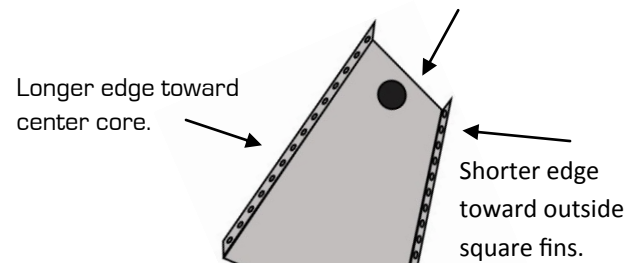
Please be sure to align larger side (2.55") to the right side when viewing from the back end.

Attach the 4 fins at the corners to make square

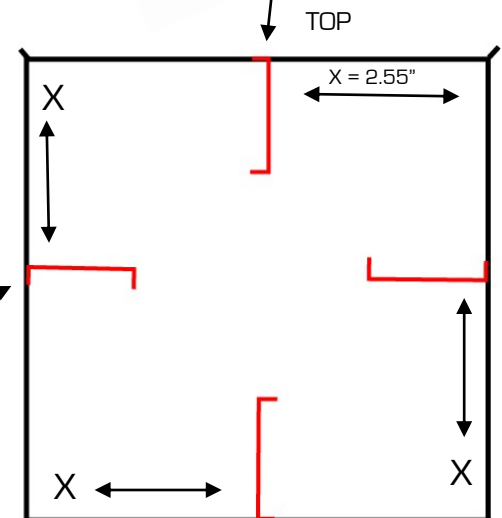
Bend upward each edge of center fins as shown below.

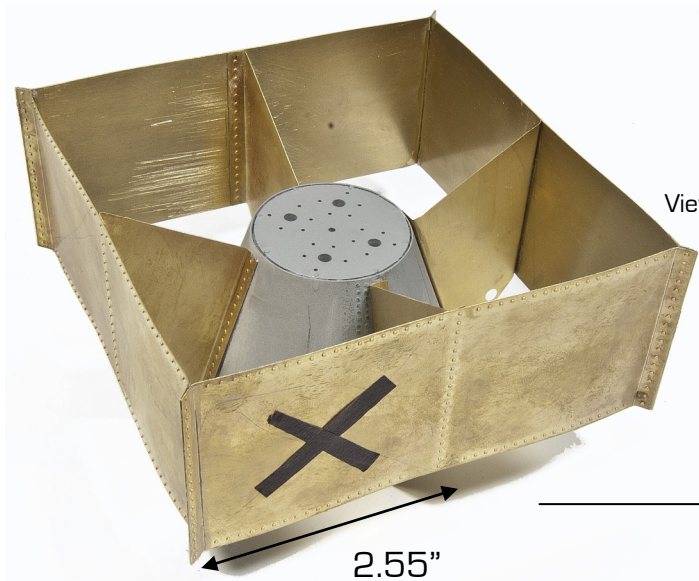


NOTE: One center fin has a single hole. This fin is to be designated as the TOP of the tail section.



For proper placement along outer fins, align rivet pattern of center fins to match the rivet pattern of outer fins.

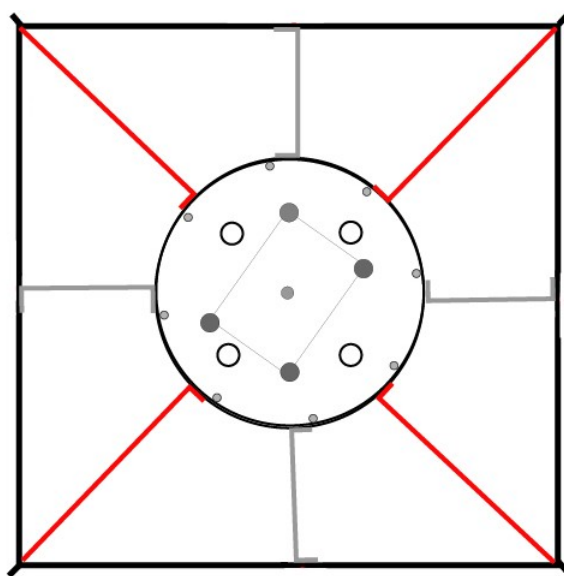
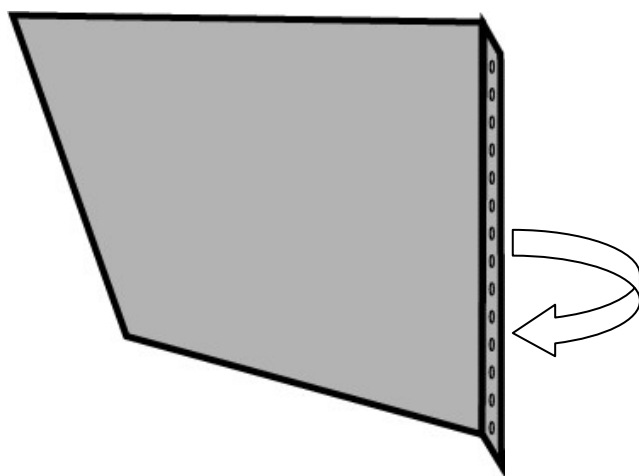




View of outer fins along with center fins, attached to center core.



Next, add the 4 corner fins to the fin box. The outside edge of the fins fit against the corner, while the interior side attaches to the center cone.



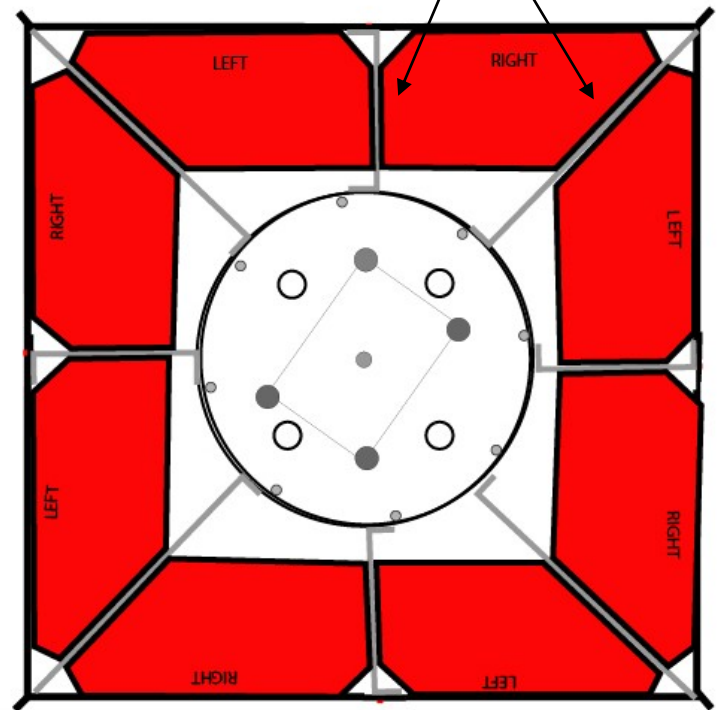
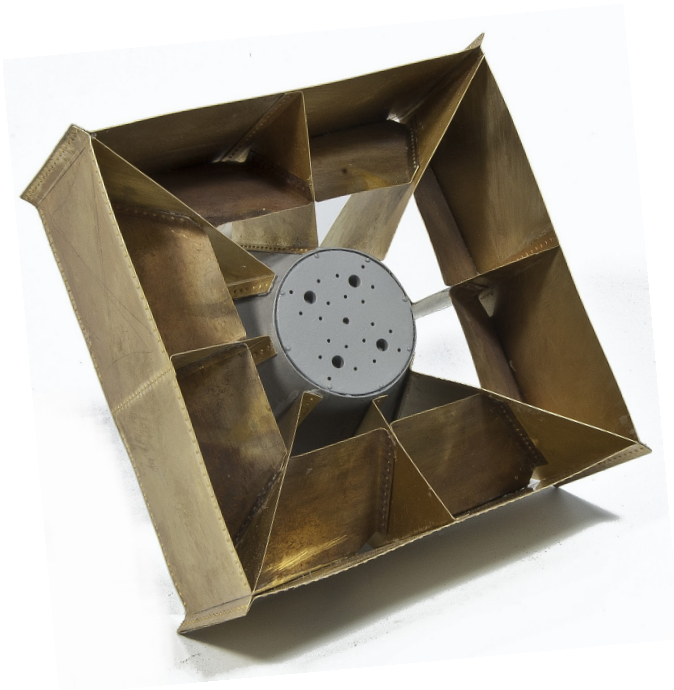
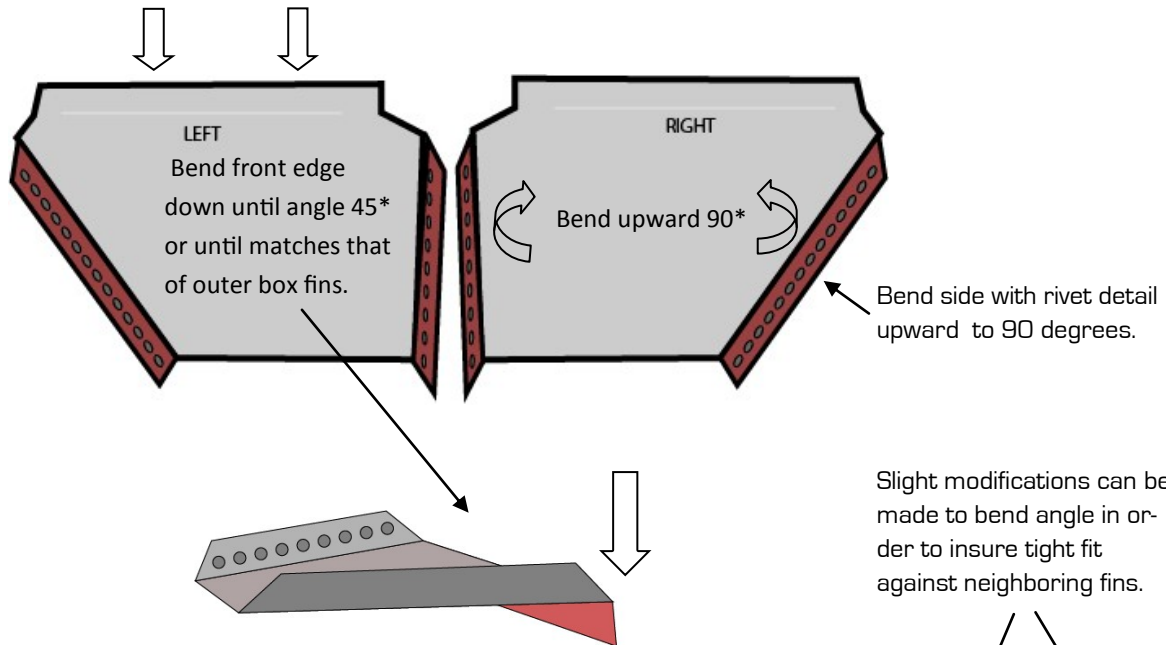
# “FAT MAN”



Insertion of the baffle fins.

NOTE: The baffle fins are LEFT & RIGHT specific corresponding to off centered rivet spacing on the outer fins as noted in earlier steps.

NOTE: The front edge of both Right and Left Baffle are bent downward, or away from the upper face. Use the enclosed scribe tool to find proper bend line.

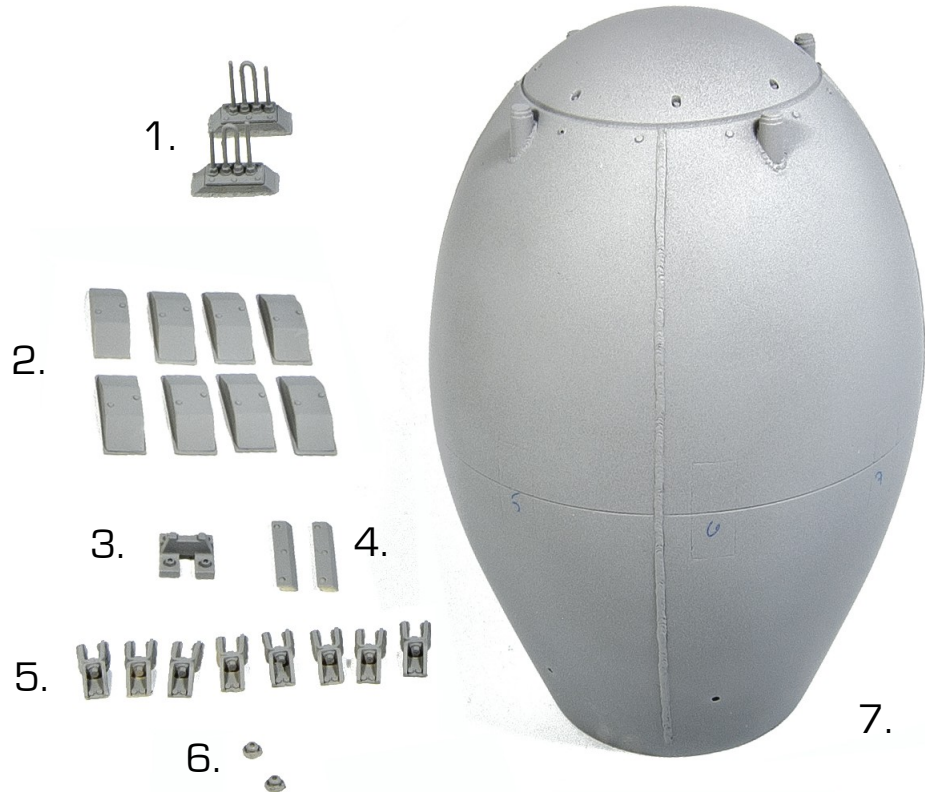


Place baffle fins within the spaces as shown above.

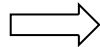
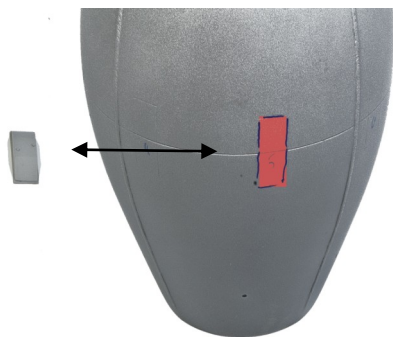
# “FAT MAN”

## Bomb Parts Detail:

1. Archie Radar Antenna
2. Hinge Fittings
3. Lifting Hook
4. Rear Stabilizer Weights
5. Rear Clasps
6. Fuse Caps
7. Bomb



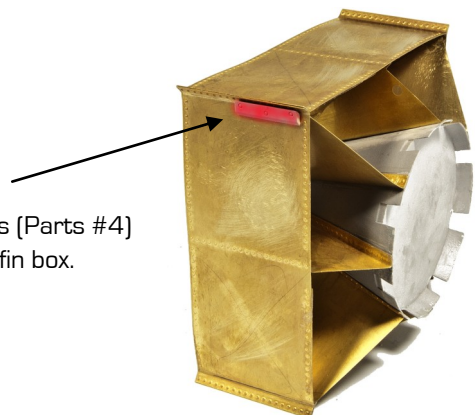
Place Hinge Fittings (Part #2) onto side of body. Look for scribed placement locators.



Place Archie Radar Antenna's (Part #1) and Lifting Hook (Part #3) and Fuse Caps (Part #6) onto body using scribed locator positions.



Add Rear Stabilizer Weights (Part #4) to the TOP of either side of fin box.

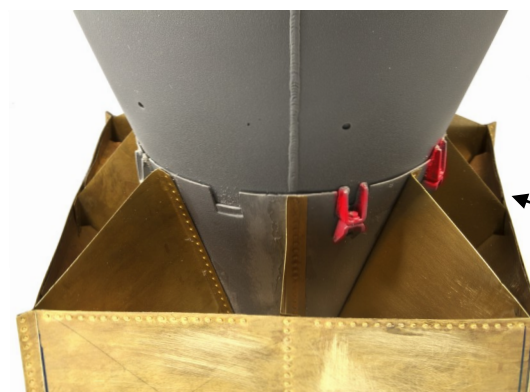
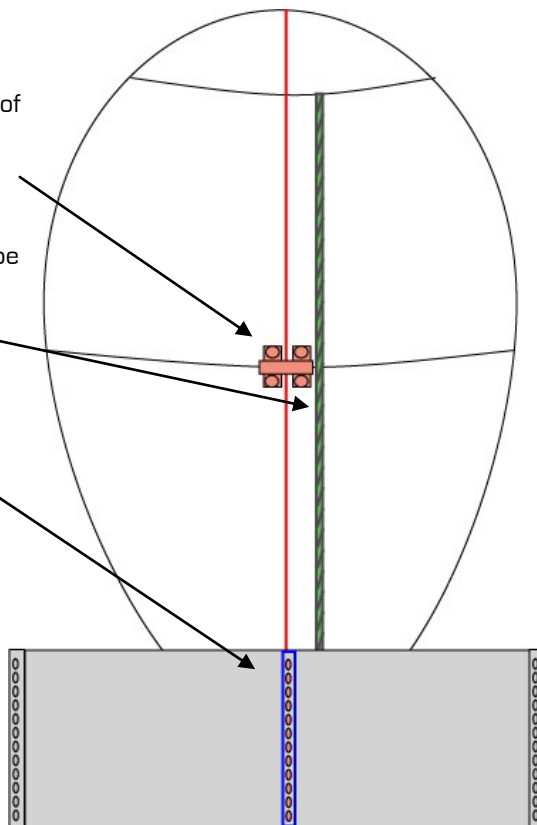


## Attachment of the Fin Box onto the Body:

It is important that careful attention be paid to the proper alignment of the rear fins to the body. The TOP CENTER FIN (the Single Center Fin with the Hole—refer to Page 2) equal to the placement of the Lifting Hook.

NOTE: WELD LINE IS NOT THE TOP CENTER LINE. Weld line should be offset slightly to the right side of the lifting hook.

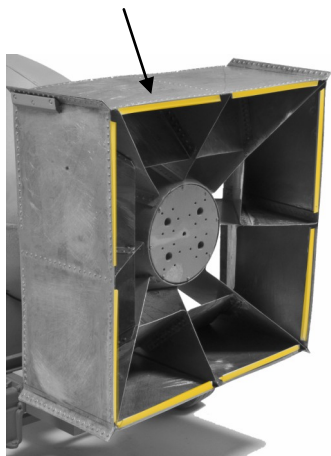
Center rivet line of Top, Square Box Fin should align with Center Line.



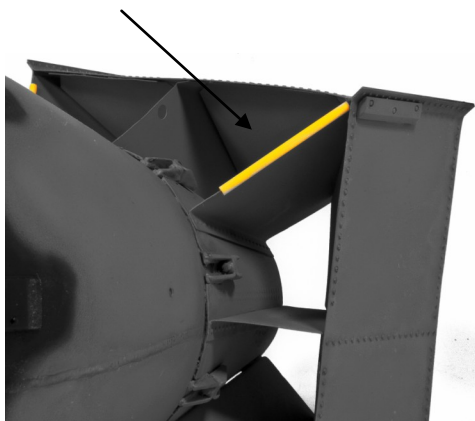
Place Rear Clasps (Part #5) into slots along tail cone.

## Finishing Details:

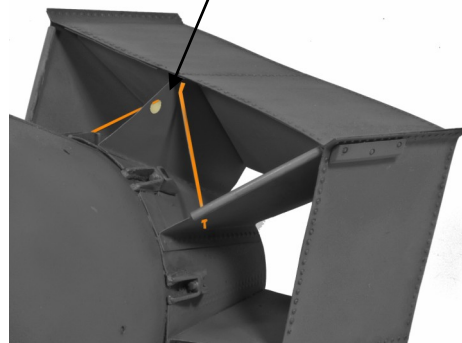
Place 2" pieces of Evergreen Angle strip (#293) along trailing edge of flat fins.



Cut small slice along edge of 1.50" Evergreen Tube (#223) and place on front edge of each diagonal fin.



Position center fin support bars (4) made from 1.75" .030 Evergreen Rod on both the Top Center and Bottom Center fins. NOTE: Hole on leading edge of TOP CENTER FIN.



Additional reference photographs and information can easily found through internet research.



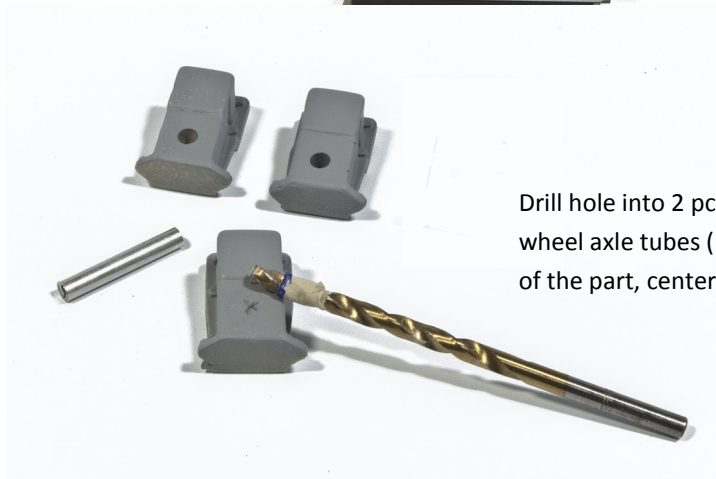
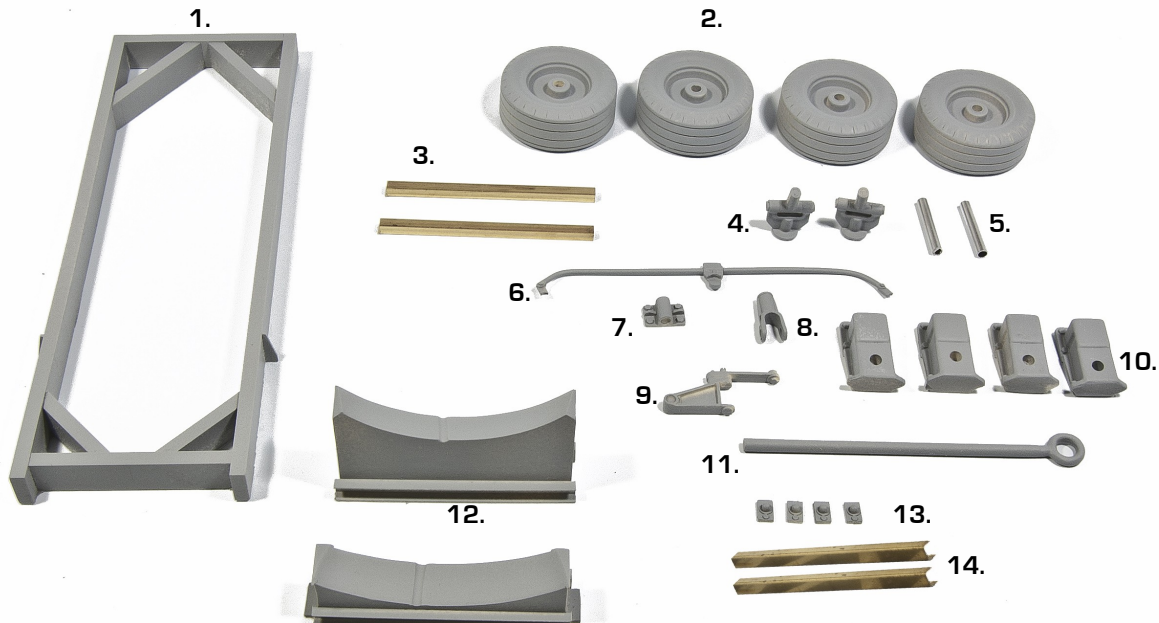
## Cart Parts Layout: Assembly Notes

# “FAT MAN”

3. Axel – Underside of Cart – K&S #151 (1/8 x .014 square brass) 2 pc cut 2.88”

5. Axel – Underside of Cart – K&S #103 (5/32nd Round Tube) 2 pc cut .75”

13. 2 support brackets #185 K&S 2.9” top side front/rear

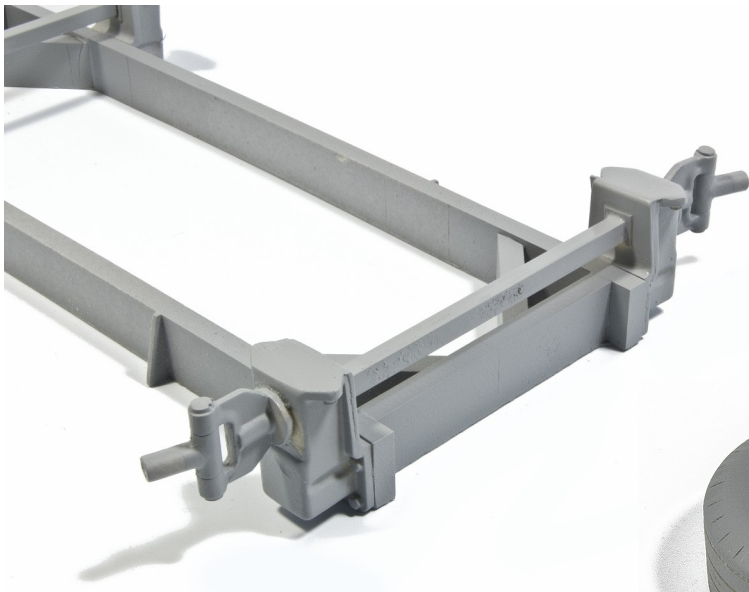


Drill hole into 2 pc. (Part #10) rear wheel mounts. Insert wheel axle tubes (Part #5). Drill holes .30 inch from bottom of the part, centered on face.

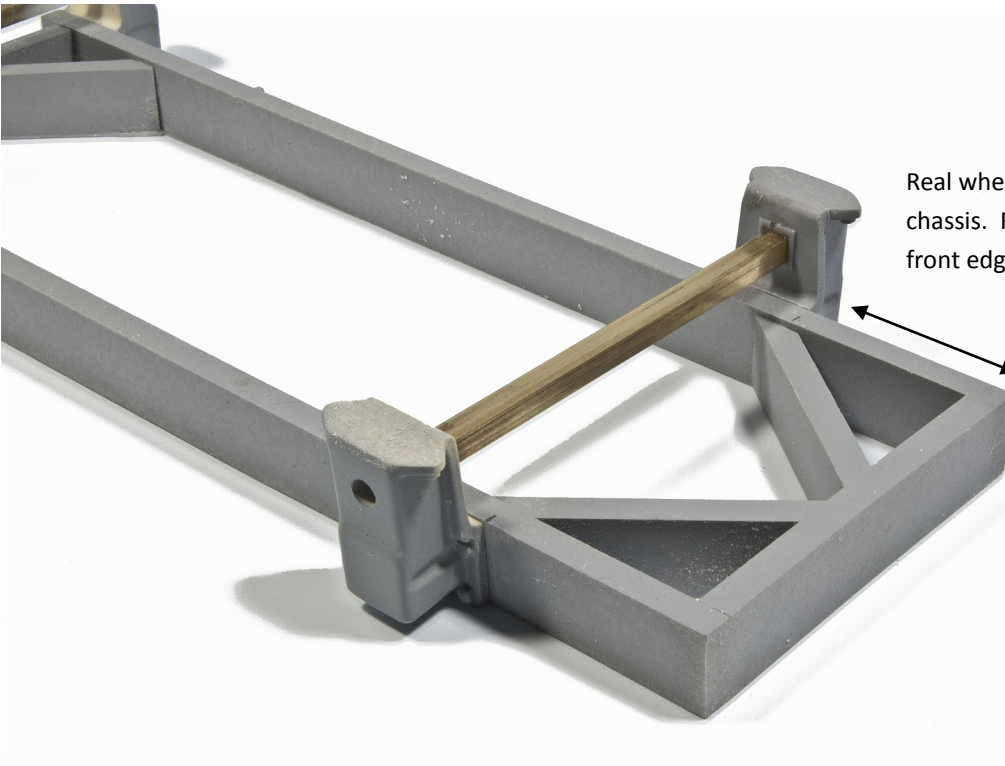


Wheel axle (Part #5) insert into rear wheel (Part #2).

# “FAT MAN”



Insert front axle post (parts #4) into front wheel. Note the steering angle of the wheels when fixing onto cart chassis.

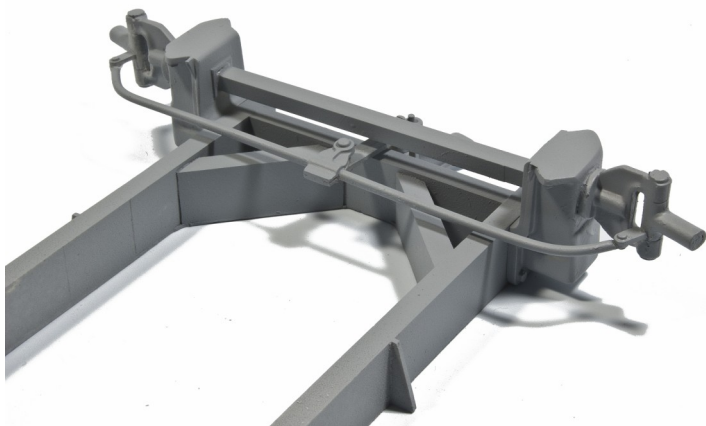


Real wheel mount placed 1.35" from rear of chassis. Front wheel mount placed flush with front edge of chassis.

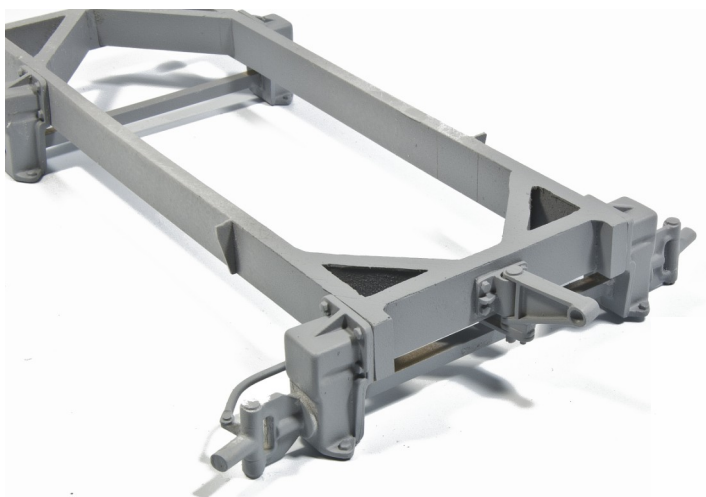
Place axel (Parts #3—brass) between front and rear wheel brackets (Parts #10).



# “FAT MAN”



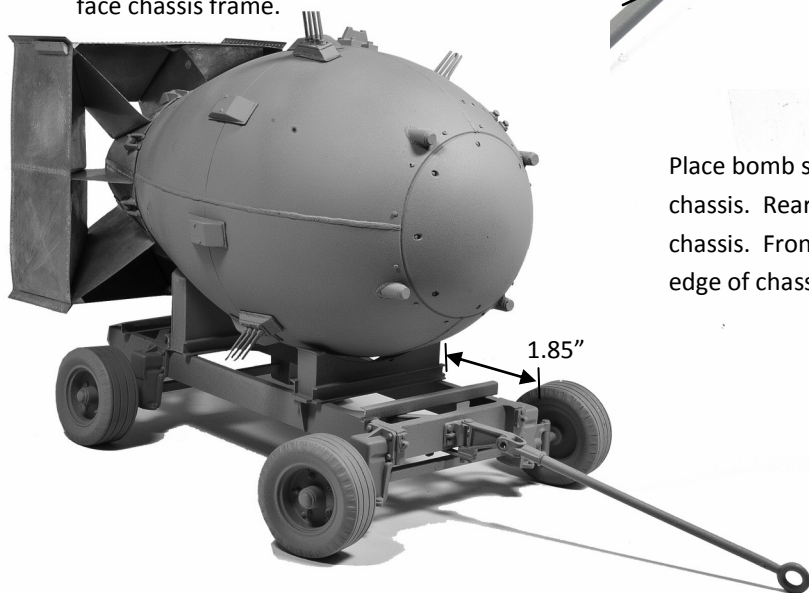
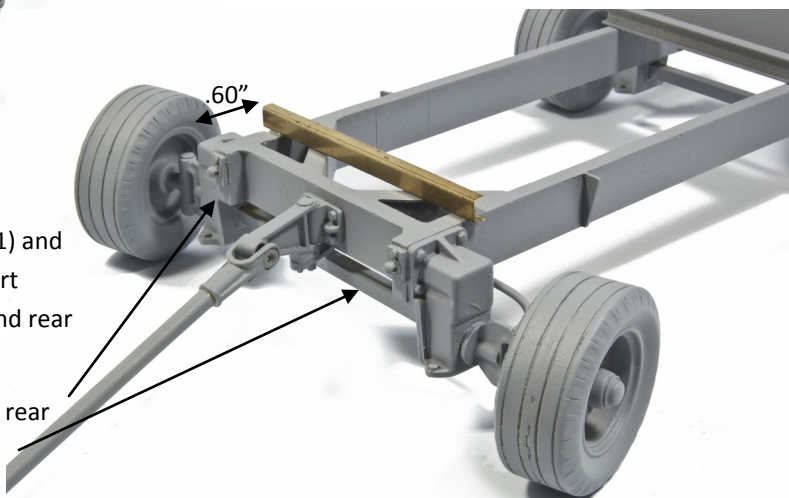
Affix Steering linkage (Part #6) to front axle mounts underside of cart.



Center towing brackets (Parts #7 & #9) along front edge of chassis.

Assemble towing rod and bracket (Parts #8 & #11) and attach to center brackets. Place brass “U” support beams (Parts #14) atop chassis .60” from front and rear of chassis.

Place small loop brackets (Part #14) on front and rear face chassis frame.



Place bomb support blocks (Parts #12) along top edge of chassis. Rear support (taller) placed 1.85” from rear of chassis. Front support (smaller) placed 1.85” from front edge of chassis.